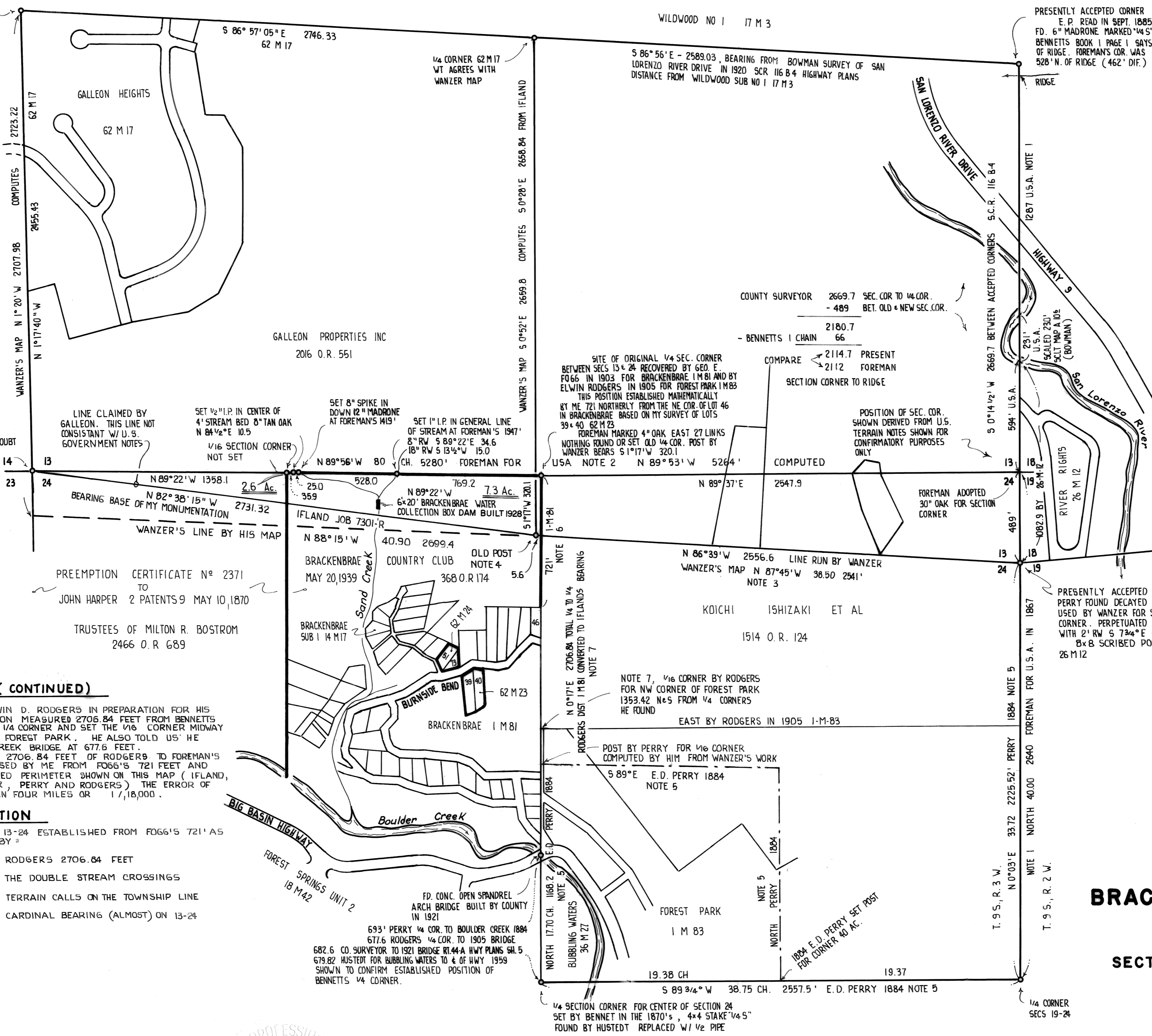


ORIGINAL CORNER POSITION NOT IN DOUBT 62 M 17



**NOTES**

THE SINGLE PURPOSE OF THIS MAP IS TO PORTRAY MY MONUMENTATION OF THE BOUNDARY BETWEEN GALLEON PROPERTIES INC. AND BRACKENBRAE COUNTRY CLUB AS THAT BOUNDARY WAS ESTABLISHED BY THE UNITED STATES GOVERNMENT.

THE FOLLOWING NOTES ARE PRESENTED IN THE ORDER THE VARIOUS SURVEYS IN THE AREA WERE EXECUTED.

NOTE 1. IN 1867 U.S. DEPUTY SURVEYOR SOLOMON W. FOREMAN IN AN ORIGINAL SURVEY OF THE TOWNSHIP LINE BETWEEN SECTIONS 19 AND 24, SETTING A 1/4 CORNER WITH TREES, ADOPTED A 30" OAK FOR CORNER TO 13-18-19-24, AND CONTINUED NORTH RECORDING TERRAIN FEATURES: 594' SAN LORENZO RIVER, PLUS 231' SAN LORENZO RIVER, PLUS 1287' RIDGE AND AT 40 CHAINS A 4" MADRONE FOR 1/4 CORNER 13-18.

NOTE 2. FOREMAN MOVED WEST A MILE AND RUNNING NORTH SET CORNER 13-14-23-24 WITH TREES. THEN EAST ON RANDOM BETWEEN 13-24 AT 1419' A STREAM SOUTHEAST, AT 1947' A STREAM SOUTHWEST, A 1/2 MILE TEMPORARY 1/4 CORNER AT 80 CHAINS FOUND THE 30" OAK 10 LINKS SOUTH, TRUE BEARING N 89°56' W AT 40 CHAINS A 1/4 CORNER POST, 4" OAK EAST 27 LINKS.

NOTE 3. JAMES O. WANZER, PROBABLY IN THE 1870S (HIS NOTES ARE NOT AT HAND) FOUND AN OAK WHICH HE ASSUMED TO BE THE CORNER 13-18-19-24 AND MADE A RESURVEY OF SECTIONS 12 AND 13. HIS MAP OF THIS WORK IS IN THE COUNTY SURVEYOR'S FILE A-4-87. E. D. PERRY COPIED THIS MAP AND FILED HIS COPY IN A-20-61.

NOTE 4. HERE IS AN ANCIENT BURNED POST MARKED 1/4 S" IN A MOSS COVERED STONE MOUND PERPETUATED BY IFLANDS 1/2" PIPE. AN OLD CROSS IN SANDSTONE BANK BEARS S 3°43' E 5.70'. WANZER'S MAP BEARS A PENCIL NOTE IN A SHAKY OLD MAN'S HAND "Cross in rock S 3 1/2° W 9 Links". IT ALSO BEARS A PENCIL NOTE IN ANOTHER HAND "4" oak East of Link". COMPARISON OF WANZER'S MAP WITH IFLANDS WORK WARRANTS THE CONCLUSION THAT THE POST IS INDEED WANZER'S. ILL-CONCEIVED ATTEMPT TO REPLACE FOREMAN'S 1/4 CORNER 13-24.

NOTE 5. IN 1884 DEPUTY COUNTY SURVEYOR E. D. PERRY (RESURVEYS 70) SET FORTH TO STAKE THE SW 40 ACRES OF THE NE 1/4 OF SECTION 24. HE FOUND FOREMAN'S E 1/4 CORNER 24 AND RAN, NORTH TO WANZER'S OAK SECTION CORNER WHICH HE FOUND AT 2225.52 FT. THE OAK BEING DECAYED HE MARKED A REDWOOD WITNESS. HE THEN RAN S 89°44' W THROUGH 24 TO BENNETTS 1/4 CORNER IN THE CENTER OF SECTION 24 AND HAVING WANZER'S MAP IN HAND COMPUTED THE BOUNDARIES OF THE 40 ACRE LOT SHOWN HEREON. HE ALSO NOTED CROSSINGS BOULDER CREEK AT 693' NORTH OF BENNETTS 1/4 CORNER.

NOTE 6. IN 1903 CIVIL ENGINEER GEO. E. FOGG SURVEYED BRACKENBRAE SUBDIVISION AND FINDING IT FLOATING N AND S ALONG THE 1/4 LINE, MEASURED ONLY ALONG THE SAME, 721 FEET FROM THE NORTHEAST CORNER OF LOT 46 TO THE 1/4 CORNER 13-24. HAVING RECOVERED THE SUBDIVISION PATTERN DURING MY SURVEYS OF 62-11-23 & 24, I USED FOGG'S 721 FEET TO ESTABLISH THE 1/4 CORNER 13-24 WHICH IS THE NORTHEAST CORNER OF THE LANDS OF BRACKENBRAE COUNTRY CLUB.

**NOTES (CONTINUED)**

NOTE 7. IN 1905 ELWIN D. RODGERS IN PREPARATION FOR HIS FOREST PARK SUBDIVISION MEASURED 2706.84 FEET FROM BENNETTS 1/4 CORNER TO FOREMAN'S 1/4 CORNER AND SET THE 1/16 CORNER MIDWAY FOR THE NW CORNER OF FOREST PARK. HE ALSO TOLD US HE CROSSED THE BOULDER CREEK BRIDGE AT 677.6 FEET. USING THIS 2706.84 FEET OF RODGERS TO FOREMAN'S 1/4 CORNER AS REESTABLISHED BY ME FROM FOGG'S 721 FEET AND COMPLETING THE COMPILED PERIMETER SHOWN ON THIS MAP (IFLAND, WILDWOOD, CO. SURVEYOR, PERRY AND RODGERS) THE ERROR OF CLOSURE IS 1.15 FEET IN FOUR MILES OR 1/18,000.

**SUMMATION**

- 1/4 CORNER 13-24 ESTABLISHED FROM FOGG'S 721 AS SHOWN IS CONFIRMED BY:
1. RODGERS 2706.84 FEET
  2. THE DOUBLE STREAM CROSSINGS
  3. TERRAIN CALLS ON THE TOWNSHIP LINE
  4. CARDINAL BEARING (ALMOST) ON 13-24

**COUNTY SURVEYORS NOTE**

IT IS NOTED THAT TITLE TO NUMEROUS PARCELS IN SECTIONS 13-18-19 AND 24 NOT SHOWN HEREON MAY BE AFFECTED WHEN VIEWED IN LIGHT OF THE FINDINGS OF THIS SURVEY. THE EXTENT OF THESE EFFECTS CANNOT NOW BE DETERMINED.

DATED: 8-4-76

D.A. Porath  
COUNTY SURVEYOR R.C.E. 7626

By: Richard L. Janney, Deputy  
RCE 16,445

**RECORD OF SURVEY**  
MADE FOR  
**BRACKENBRAE COUNTRY CLUB**  
IN  
SECTIONS 13 & 24, T. 9 S., R. 3 W., M.D.M.

SANTA CRUZ COUNTY  
CALIFORNIA

1" = 400'

**SURVEYOR'S CERTIFICATE**

This map correctly represents a survey made by me or under my direction in conformance with the requirements of the Land Surveyor's Act at the request of  
**BRACKENBRAE COUNTRY CLUB**  
JUNE 19 1976  
Stanley B. Smith  
L.S. No. 2265

**COUNTY SURVEYOR'S CERTIFICATE**

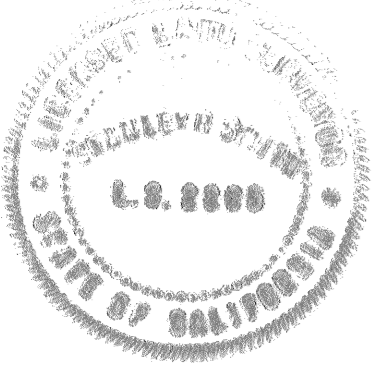
This map has been examined for conformance with the requirements of the Land Surveyor's Act this 4 day of August 1976  
D.A. Porath  
County Surveyor RCE 7626  
By Deputy Richard L. Janney  
RCE 16,445

**RECORDER'S CERTIFICATE**

Filed this 4th day of August 1976  
at 3:18 P.M. in Book 62 of Maps of page 57  
at the request of Co. Surveyor  
# 34628  
Richard C. Neal  
County Recorder  
By Deputy Diana L. Rodriguez

**BASIS OF BEARINGS**

BEARING BASE OF COMPILED DATA AS SHOWN  
BEARING BASE OF MY MONUMENTED SECTION LINE  
IS N 82°38'15" W FROM OLD POST TO 1/2" I.P. RCE 6270  
FROM IFLAND'S JOB 7301-R WHICH IS 62 M 17.  
N 45° E GALLEON HEIGHTS (IFLAND) = N 44° 12' E  
BRACKENBRAE (62 M 23)



RECORDING REQUESTED BY

Stanley R. Smith  
Surveyor

WHEN RECORDED MAIL TO:

Stanley R. Smith  
P. O. Box 84  
Aptos, CA 95003C. Surveyor  
12.25300  
30PCERTIFICATE OF CORRECTION

NOTICE IS HEREBY GIVEN THAT PAGE No. 1 of that certain map filed in Book 62 of Maps at Page 57, Santa Cruz County Records, and being a map entitled "RECORD OF SURVEY MADE FOR BRACKENBRAE COUNTRY CLUB" is corrected in accordance with Section 8770.5 of the Land Surveyors Act as follows:

- (1) In the Northeastern corner of the map the note directed to the  $\frac{1}{4}$  Section corner between Sections 13 and 18 should read:

"Presently accepted corner. Deputy County Surveyor E. D. Perry in a survey for E. P. Read in September, 1885 found a six inch madrone tree marked "45" on the bark. Resurveys Page 119, E. D. Perry field book 4, Page 5. Bennetts Book 1, Page 1 says  $\frac{1}{4}$  corner is one chain North of ridge. Foreman's corner was a four inch madrone 528 feet North of ridge. (462 feet dif.)"

- (2) NOTE 3. For James O. Wanzer read Horace Wanzer.  
 (3) For Galleon Properties, Inc. 2016 O.R. 551 read Galleon Properties, Inc. 2097 O.R. 494.  
 (4) For 2.6 Ac. Read 2.5 Ac.  
 (5) For 7.3 Ac. Read 7.5 Ac.

The names of the present fee owners of real property affected by such correction are as follows:

Galleon Properties, Inc.  
 Trustees of Milton R. Bostrom  
 Brackenbrae Country Club

CERTIFICATE OF SURVEYOR

THIS IS TO CERTIFY that the above Certificate of Correction was prepared by me.

Stanley R. Smith  
 Stanley R. Smith L. S. 2265

CERTIFICATE OF COUNTY SURVEYOR

THIS IS TO CERTIFY that the above Certificate of Correction has been examined this 17<sup>th</sup> day of October, 1977 for conformance with the requirements of Section 8770.5 of the Land Surveyors Act.

Donald A. Bostrom  
 County Surveyor RCE 7626